
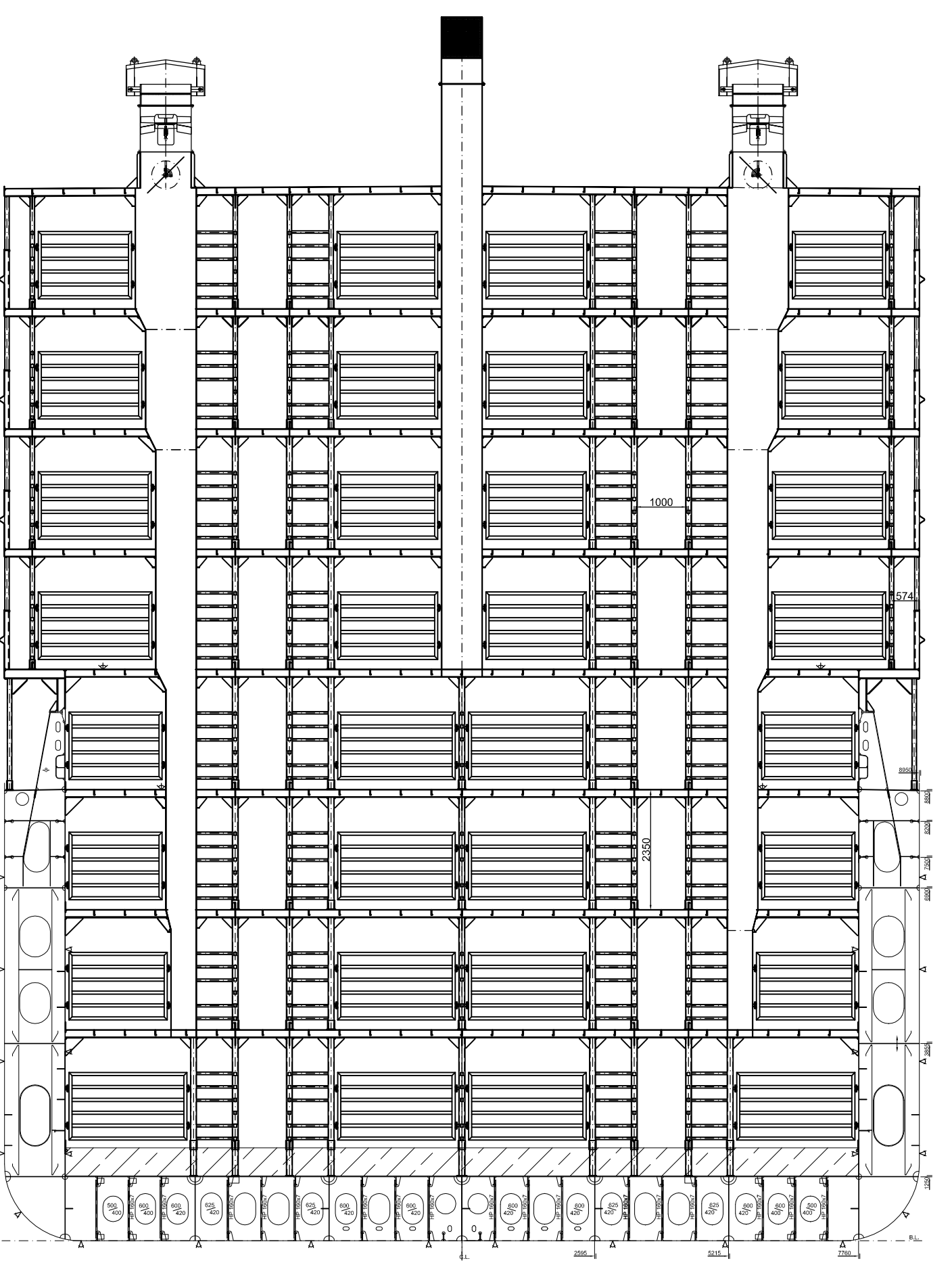
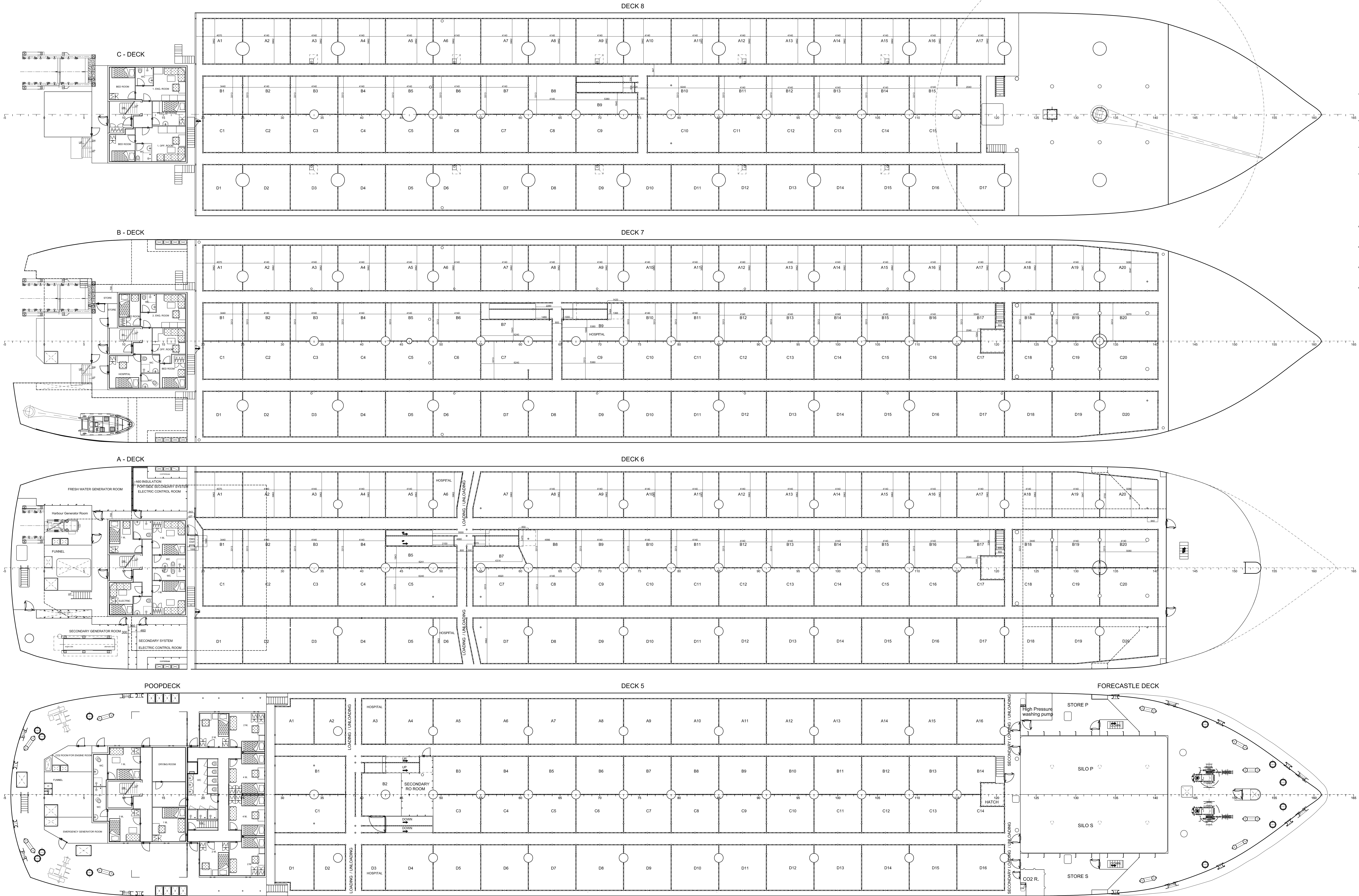


MAIN PARTICULARS				
LENGTH OVERALL	=	115.35 m.		
LENGTH BETW. P.P.	=	108.00 m.		
BREADTH MOULDED	=	17.90 m.		
DEPTH TO MAIN DECK	=	8.80 m.		
DRAUGHT (SUMMER)	=	7.17 m.		
IMO NO	=	9083067		
CLASS : BUREAU VERITAS : I + HULL + MACH, UNRESTRICTED NAVIGATION				
LIVE STOCK CARRIER, + AUT-UMS				

4	22.05.2015	R.S.G.	UPDATED	G.G.
3	12.11.2014	Y.KESKIN	UPDATED	G.G.
2	09.09.2013	R.S.G.	UPDATED	G.G.
1	31.01.2013	R.S.G.	UPDATED	G.G.
NO.	DATE	REVISED BY	REVISION	CHECKED BY

<div>MAVI EGE</div> <div></div>		MAVI EGE MÜHENDİSLİK LTD. STİ			
POSTANE MAH. CEBECİ SOK. MANASTIRYOLU CAD. NO:7 D:02					
TUZLA-İSTANBUL- TÜRKİYE					
TEL- FAX : +90 (216) 446 44 96 - + 90 (216) 395 21 84					
Web page : www.mavi-ege.net e-mail : tassafm@mavi-ege.net					
PROJECT:		M/V HAIDAR			
		LIVE STOCK CARRIER			
TITLE:		GENERAL ARRANGEMENT			
OWNER		SHIPYARD			
TAMARA SHIPPING		SEFINE SHIPYARD / YALOVA / TURKEY			
DESIGNED BY		GÖKHAN GÖKE			
CAD/CAE		HURREM ALTINBILEK			
CONTROL		RAZIYE SABAN GÖKE			
HULL NO	CLASS	DATE	SCALE	DRW'N	SHEET
-	B.V.	12.01.2012	1/100	LSC1-M-01	01/03



MAIN PARTICULARS
LENGTH OVERALL = 115.35 m.
LENGTH BETW. P.P. = 108.00 m.
BREADTH MOULDED = 17.90 m.
DEPTH TO MAIN DECK = 8.80 m.
DRAUGHT (SUMMER) = 7.17 m.
IMO NO = 9083067
CLASS : BUREAU VERITAS : 1 + HULL + MACH, UNRESTRICTED NAVIGATION
LIVE STOCK CARRIER, + AUT-UMS

4	22.05.2015	R.S.G.	UPDATED	G.G.
3	12.11.2014	Y.KESKIN	UPDATED	G.G.
2	09.09.2013	R.S.G.	UPDATED	G.G.
1	31.01.2013	R.S.G.	UPDATED	G.G.
NO.	DATE	REVISED BY	REVISION	CHECKED BY

MAVİ EGE		MAVİ EGE MÜHENDİSLİK LTD. STİ		
POSTANE MAH. ÇEBECİ SOK. MANASTIRYOLU CAD. NO:7 D:02		TUZLA-İSTANBUL-TÜRKİYE		
TEL-FAX : +90 (216) 446 44 66 - +90 (216) 395 21 84		Web page : www.mavi-ege.net e-mail : tasatim@mavi-ege.net		
PROJECT:		MV HAIDAR		
TITLE:		LIVE STOCK CARRIER		
OWNER		GENERAL ARRANGEMENT		
DESIGNED BY		TAMARA SHIPPING		
CAD/CAE		SHIPYARD		
CONTROL		SEFINE SHIPYARD / YALOVA / TURKEY		
HULL NO		CLASS	DATE	SHEET
-		B.V.	12.01.2012	02/03

The floor plan of the ship 'M/V L. J. P. 1980' is divided into several main sections. At the stern (left), there is a steering gear room, an aft store, an aft conference room, a galley, a mess, a provisions store, a laundry, and an engine room. A large deck area with a crane is located at the stern. The main body of the ship contains a series of storage rooms labeled A1 through A15, B1 through B15, C1 through C15, and D1 through D15. A central hospital and a large storage area for oil and other materials are also present. At the bow (right), there are two large silos labeled SILO P and SILO S, and a large storage area for oil and other materials. The plan also shows various corridors, stairs, and other smaller rooms.


The plan view shows the ship's deck layout with various compartments and structural elements. Key features include:

- Central Corridor:** A central corridor runs the length of the ship, with rooms on either side.
- Rooms and Compartments:**
 - Forward Section:** Includes a food space, stowage room, and fresh water tank.
 - Middle Section:** Features a hospital, engine control room, work shop, and platform deck.
 - Aft Section:** Includes a heavy oil day tank, engine control room, and various storage areas.
- Tanks and Storage:**
 - HFO Bunker Tanks:** Four large tanks labeled HFO BUNKER TANK 1 through 4.
 - FW Ballast Tanks:** Multiple tanks labeled FW BALLAST TK along the sides.
 - SILO P and SILO S:** Two large silos located at the stern.
- Structural Elements:**
 - VENTILATION:** Several ventilation units are shown.
 - DRY DOCK:** A dry dock area is located at the forward end.
 - PLATFORM DECK:** A platform deck is located in the middle section.
- Dimensions and Scale:** The plan view includes a scale bar at the bottom, ranging from 0 to 165 meters.

This detailed plan view illustrates the deck layout of the ship, showing various compartments, tanks, and structural elements. The layout is organized into several rows of compartments, labeled A1 through A12, B1 through B12, C1 through C12, and D1 through D12. Key features include:

- Structural Elements:** The ship's hull is shown with a central longitudinal axis and various structural members like bulkheads and stiffeners.
- Tanks and Storage:** Large tanks are labeled, including HFO BUNKER TANK 1, 2, 3, and 4, and SILO P and SILO S. There are also FW BALLAST TANKS and FOREPEAK BALLAST TANKS.
- Functional Areas:** The layout includes a PUMP AREA, HOSPITAL, and various smaller rooms and corridors.
- Navigation and Orientation:** A scale bar at the bottom indicates distances in meters, ranging from 0 to 160. A compass rose is located near the center of the ship.
- Deck Features:** The deck is marked with various symbols, including circles, squares, and lines, indicating specific features and boundaries.

CLASS : BUREAU VERITAS : I + HULL + MACH, UNRESTRICTED NAVIGATION
LIVE STOCK CARRIER, + AUT-UMS

	MAVA EGE MÜHENDİSLİK LTD. STI.				
	POSTANE MAH. ÇEBECİ SKI. MANASTIRYOLU CAD. NO:7 D:02 TUZLA-İSTANBUL-TÜRKİYE				
	TEL-FAX : +90 (216) 446 44 86 - + 90 (216) 395 21 84 Web : www.mavagesp.net - e-mail : isla@mvage.net				
	M/V HAIDAR LIVE STOCK CARRIER				
GENERAL ARRANGEMENT					
TAMARA SHIPPING			SHIPYARD SEFINE SHIPYARD / YALOVA / TURKEY		
DESIGNED BY		GÖKHAN GÖKE HÜRREM ALTINBILEK RAZİYE SABAN GÖKE			
HULL NO	CLASS	DATE	SCALE	DRWN	SHEET
	B.V.	12.01.2012	1/100	LSC1-M-401	03/03